

# HOUSTON

GREATER HOUSTON **PARTNERSHIP.**

HOUSTON.ORG

# GREATER HOUSTON PARTNERSHIP

**Making Houston the best place to live, work and build a business.**

Serves the **12-county** Greater Houston region

Represents more than **900 businesses and institutions**

Members accounts for **one-fifth of Houston's workforce**



**Promotes** economic development and trade

**Advocates** for effective public policy

**Convenes** Houstonians on key issues



# GREATER HOUSTON **PARTNERSHIP**

Making Houston Greater.

## Real Estate

Initiate property searches

## Site Tours

Coordinate site selection visits, regional briefings

## Research

Provide data on key business and site factors

## Access

Direct access to top business and civic leaders

## Permits

Advocacy for projects and regulatory issues

## Incentives

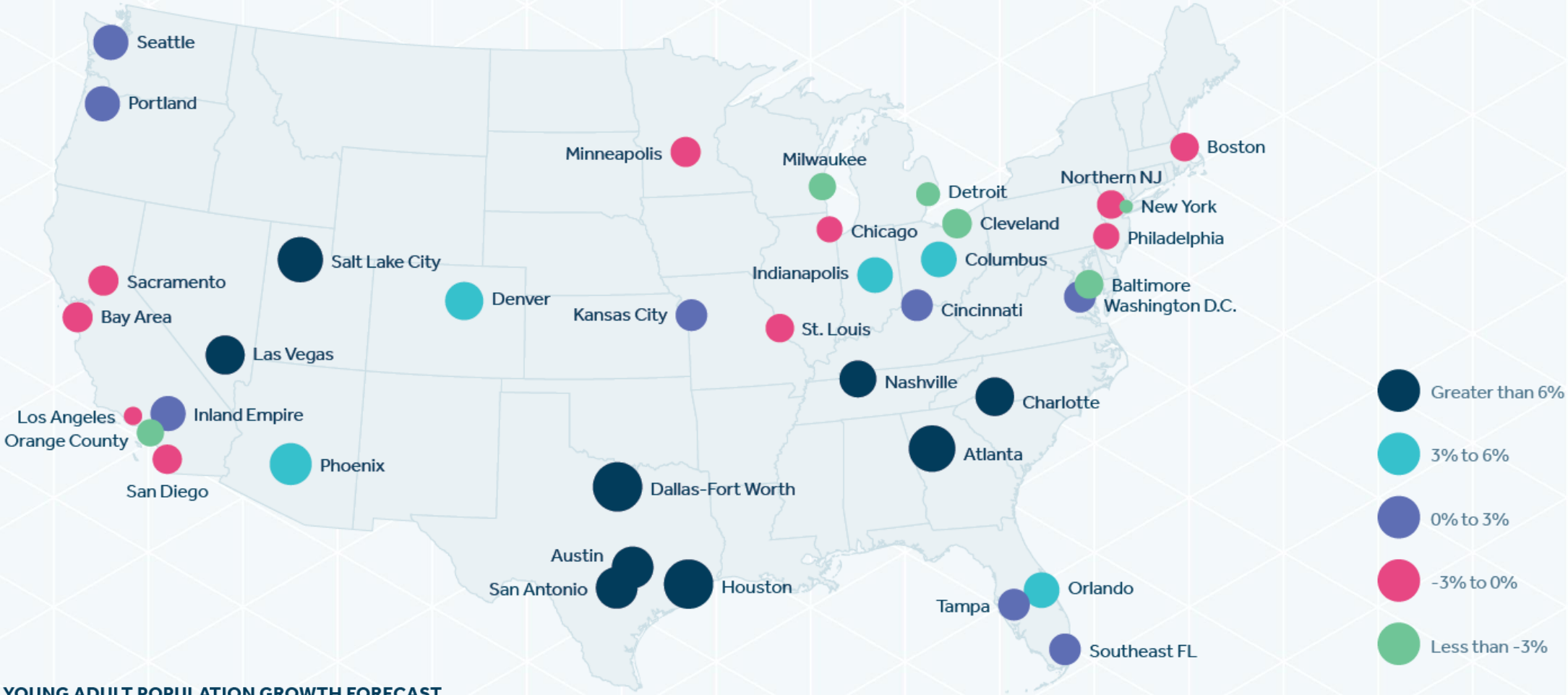
Assist in evaluating and applying for benefits



# REGIONAL UPDATE

**HOUSTON**

# YOUNG POPULATION GROWTH

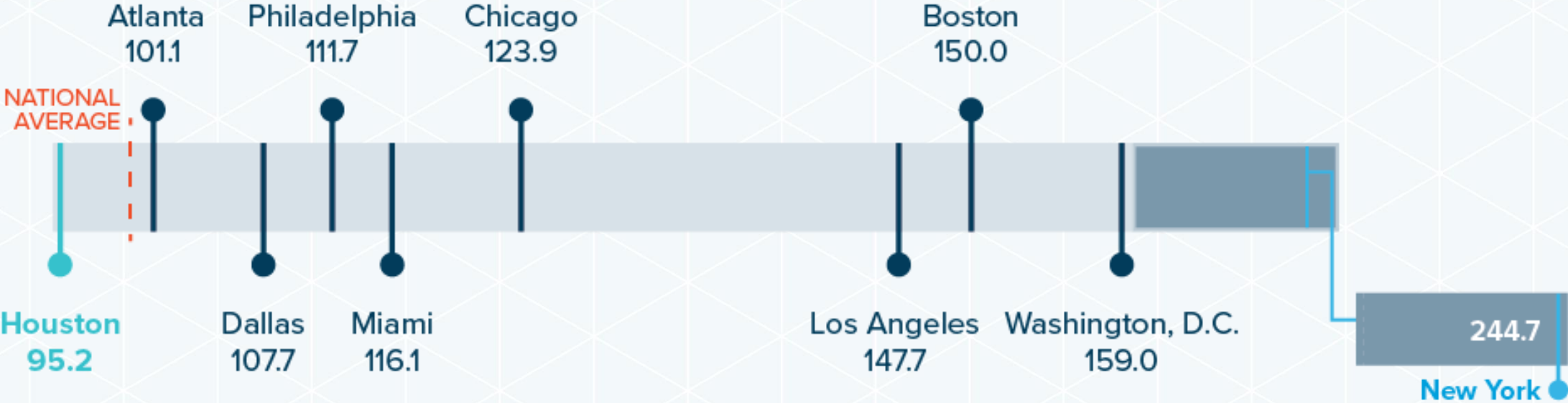


Sources: Marcus & Millichap Research Services, U.S. Census Bureau, Moody's Analytics

# LOW COST OF LIVING

## COST OF LIVING COMPARISON

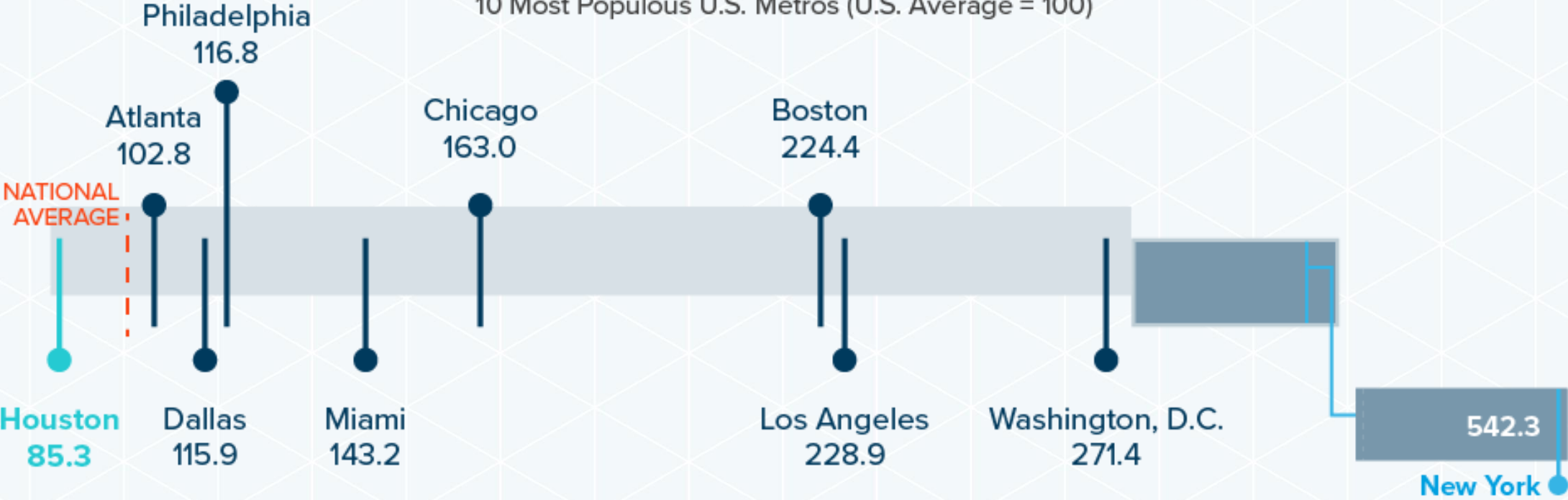
10 Most Populous U.S. Metros (U.S. Average = 100)



# LOW COST OF HOUSING

## HOUSING COST COMPARISON

10 Most Populous U.S. Metros (U.S. Average = 100)





# ENERGY TRANSITION

**HOUSTON**



# WHY HOUSTON FOR ENERGY TRANSITION

Talent &  
Expertise

Research &  
Development

Capital  
Investment

Ability to  
Scale

Public Policy

Momentum



# HOUSTON LEADING THE ENERGY TRANSITION

March 2023

GREATER HOUSTON  
**PARTNERSHIP**

# The Houston energy transition initiative

- HETI's vision is to leverage Houston's **leadership** to accelerate global solutions for an **energy-abundant, low-carbon** future
- A **Steering Committee** of 20+ members guide HETI's efforts
- Our strategy leverages a portfolio of **technologies, policies, and market incentives** that will create and drive sustainable and equitable **economic growth** for the region.

Baker Hughes	LyondellBasell
Bechtel Energy	NRG Energy
bp	Oxy
Calpine	Plains All American Pipeline
CenterPoint Energy	SABIC
Chevron	SLB
ConocoPhillips	Shell
Dow	Sunnova
ExxonMobil	TC Energy
Hess	wood
HIF Global	Woodside Energy

# ACTION IS UNDERWAY ACROSS VALUE CHAINS IN THREE DOMAINS

**JUMPSTART** emerging sectors where Houston has a distinct advantage

01

CCUS  
HYDROGEN  
CIRCULAR ECONOMY - PLASTICS  
BATTERY MANUFACTURING & ENERGY STORAGE SOLUTIONS

**ATTRACT** and support companies in established “new energy” industries

02

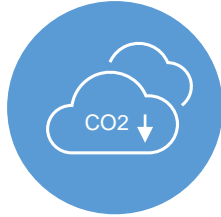
RENEWABLES (SOLAR AND WIND)  
RENEWABLE NATURAL GAS  
LOW-CARBON LNG  
BIOFUELS

**DEPLOY** cross-cutting initiatives to attract and grow companies in all Energy value-chains

03

ENERGY EFFICIENCY  
NATURAL GAS & OIL  
PETROCHEMICALS  
CARBON TRADING  
ELECTRIC & FUEL CELL VEHICLES  
NATURE-BASED SOLUTIONS  
ADVANCED MATERIALS  
GEOTHERMAL, AND OTHERS

# HETI vertical workstreams – PORTFOLIO APPROACH



## Industry Decarbonization

Hosting roundtable series on decarbonization metrics, opportunities and applications across industry



## CCUS

Focused on policies and economics needed to remove barriers to commercialization



## Clean Hydrogen

Published white paper on "Houston as the epicentre of a global hydrogen hub"



## Power Management

Impact of Energy Transition on grid and resilience initiatives



## Advanced Recycling

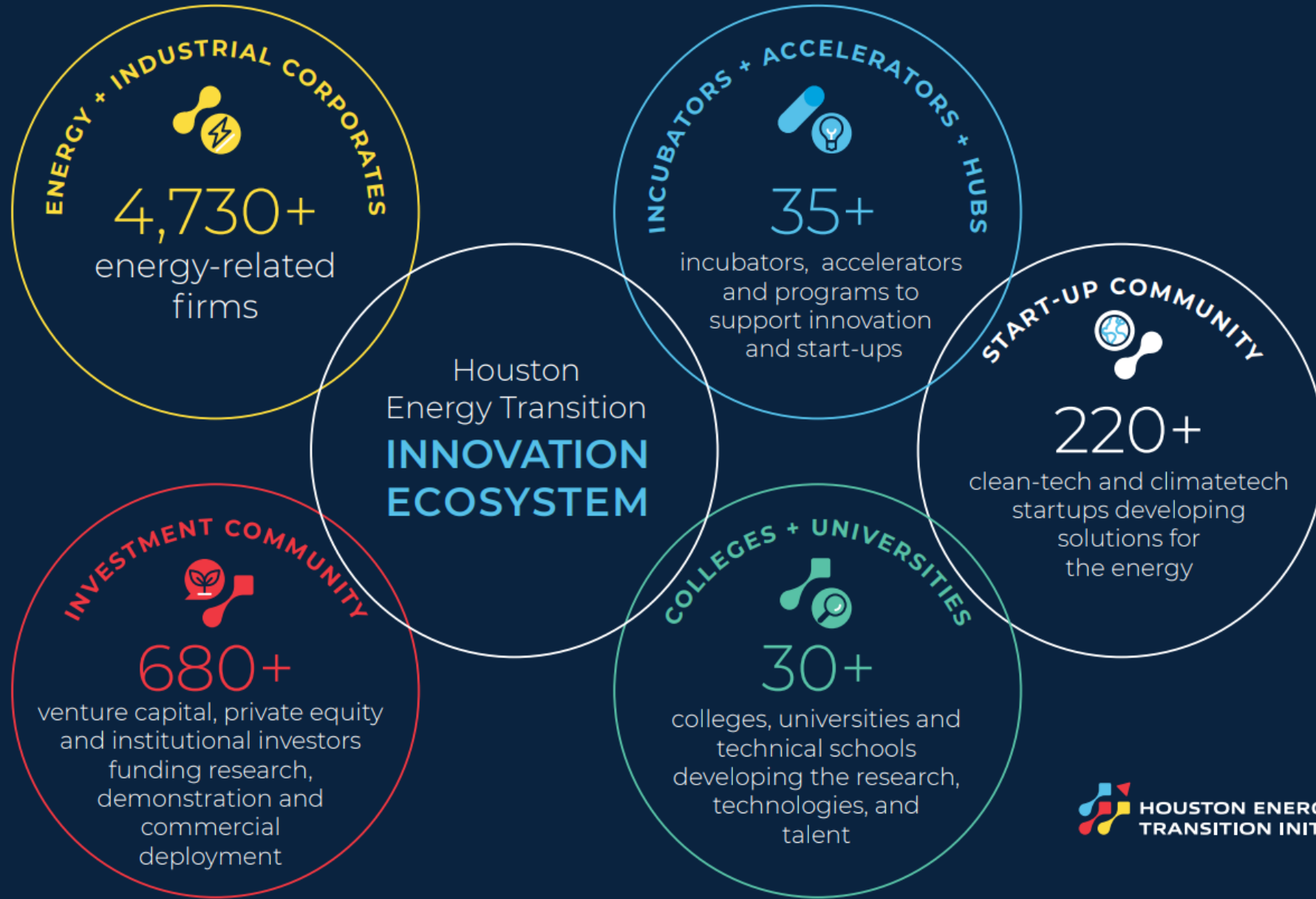
Innovation and scale-up of advanced recycling



## Capital Formation

Published report on Houston's energy transition finance opportunity and ambition

HETI IS SUPPORTING A **FAST GROWING INNOVATION ECOSYSTEM** ACROSS THE GREATER HOUSTON AREA

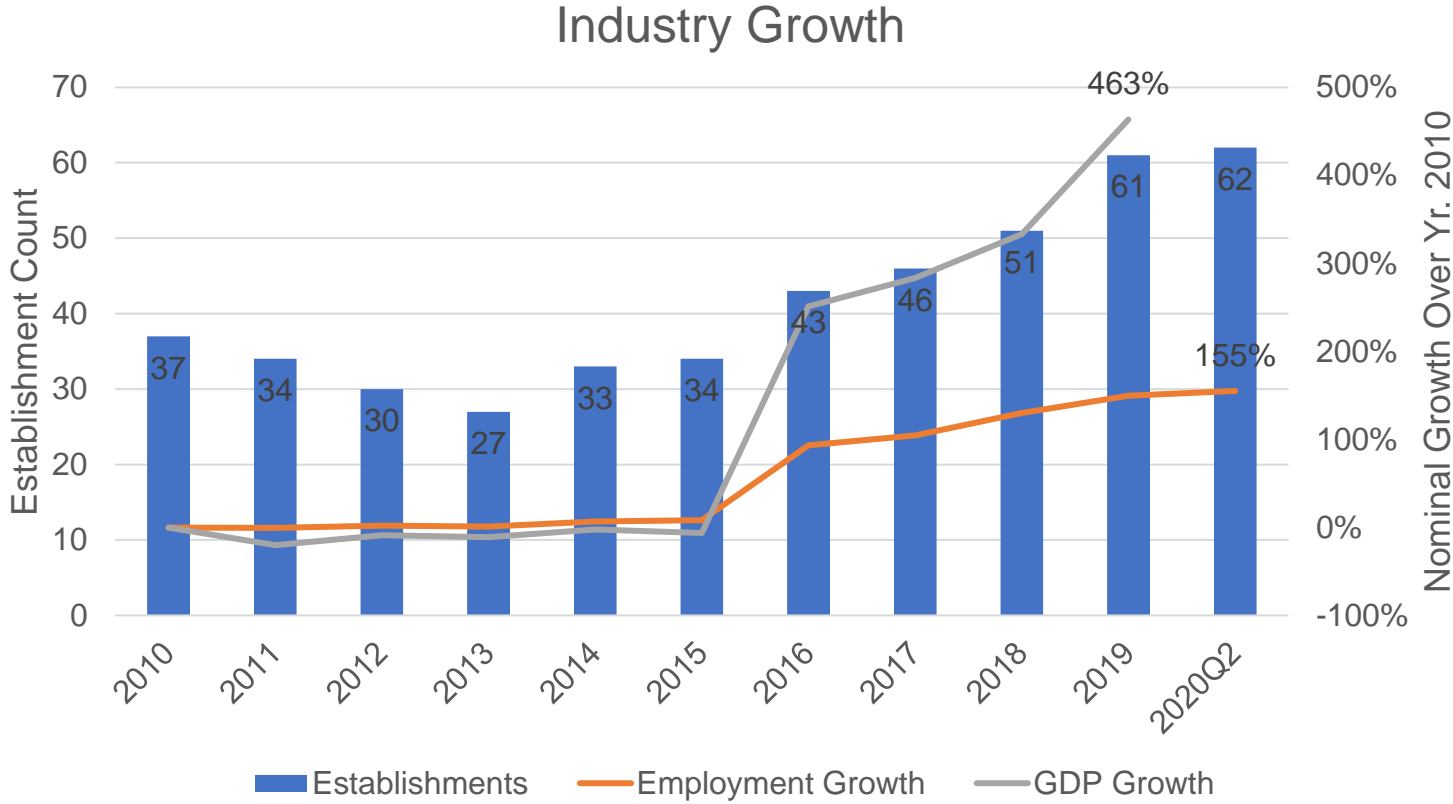




# LIFE SCIENCES

**HOUSTON**

# LIFE SCIENCE INDUSTRY GROWTH IN HOUSTON ('10 - '20)



**50%** Establishment Growth

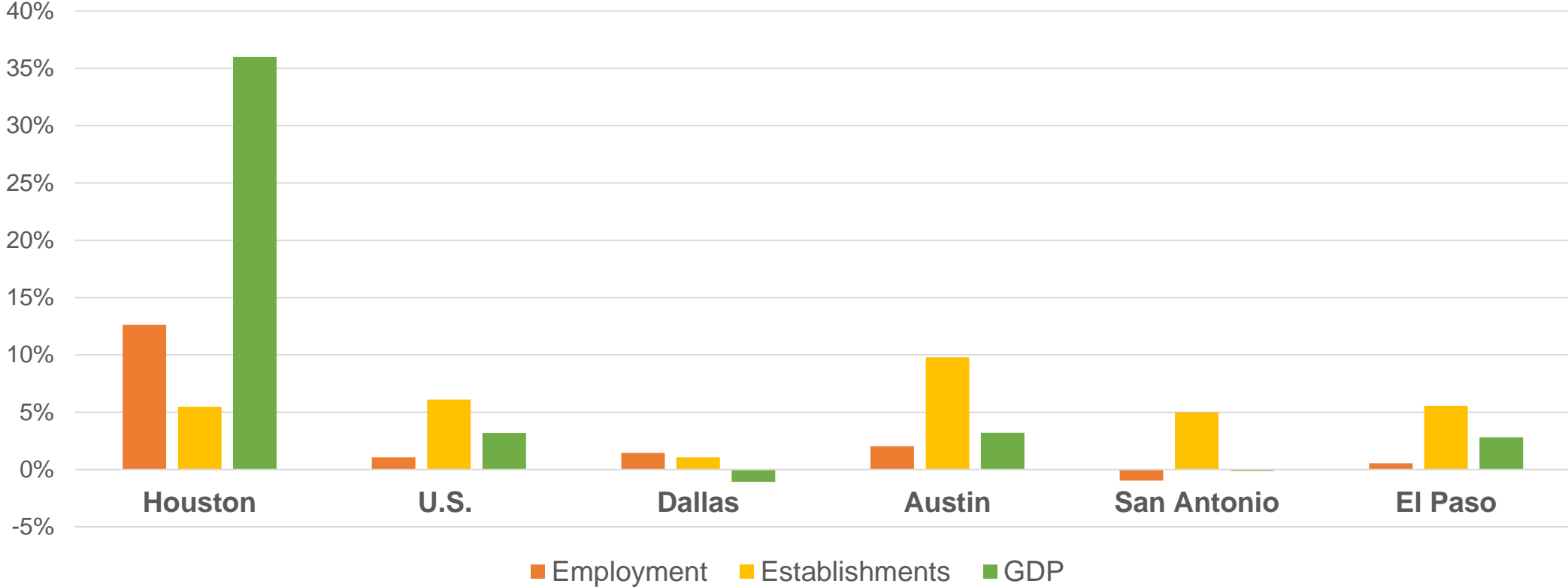
**150%** Employment Growth

**~500%** GDP Growth



# LIFE SCIENCE INDUSTRY GROWTH COMPARISON

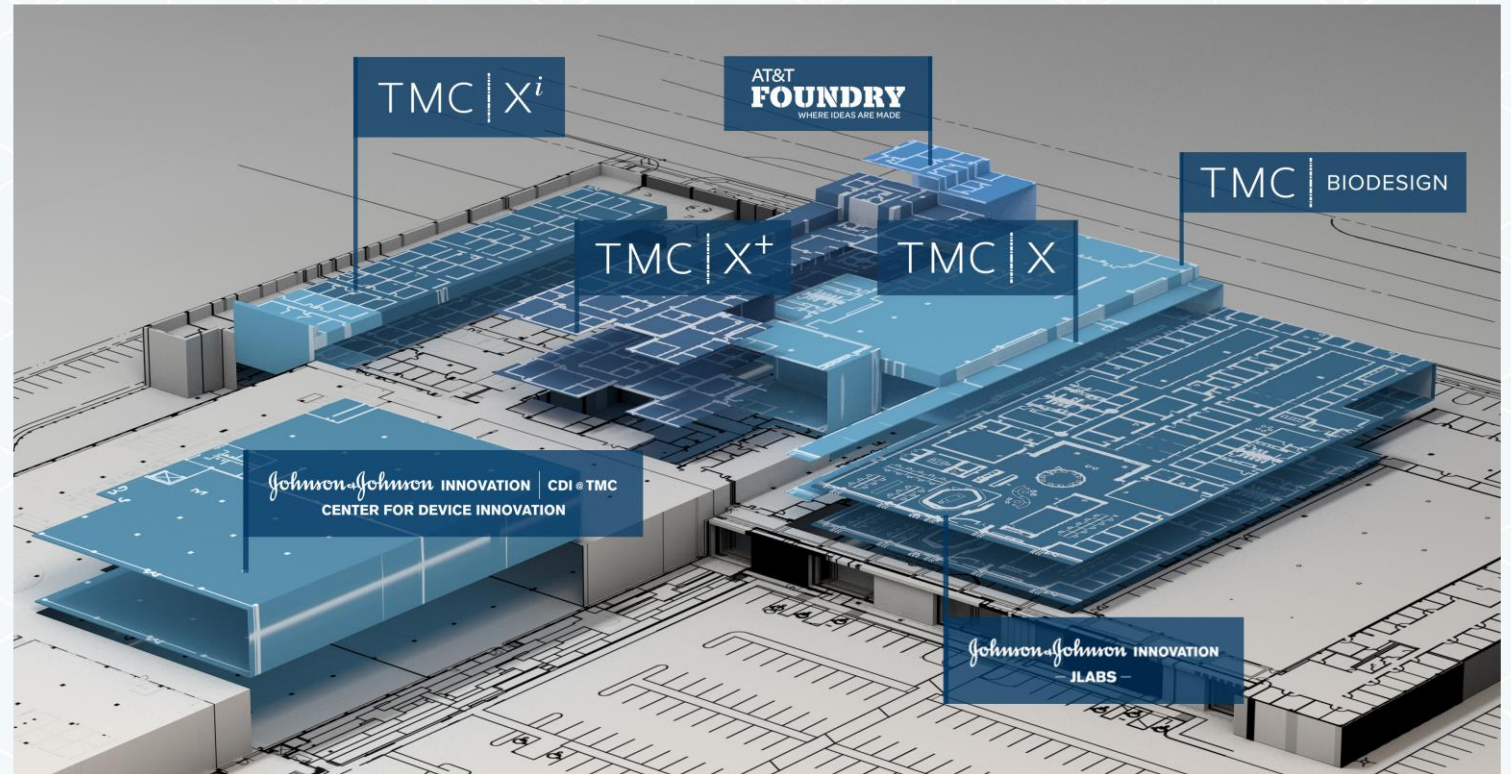
Avg Annual % Change, Last 10 Years



Source: GHP calculations using data from JobsEQ

# TMC

TEXAS  
MEDICAL  
CENTER



The Texas Medical Center's **Innovation Institute** features over 200K square feet of accelerator and incubator space aimed to help startup companies commercialize new medical technologies

# LIFE SCIENCE DEVELOPMENTS



Texas Medical Center's **TMC3** is a multi-institutional 37-acre research campus that brings together the best institutions in clinical care, research and industry.



**Levit Green** is a 52-acre site that is slated to include a mix of office space, research facilities, retail, residential and green space.



**Texas A&M Innovation Plaza** is a \$550 million, 5-acre, mixed-use complex that includes education space for medicine and engineering, student housing and commercial space for clinical, research and office use.

**Jeffrey Blair**  
Senior Director  
Europe, Middle East & Africa

[crhodes@houston.org](mailto:crhodes@houston.org)  
+1 (713) 844-3639



**GREATER HOUSTON  
PARTNERSHIP**

Making Houston Greater.

